

Caboolture Station Courtesy Bus

The Abbey Medieval Festival is located on a site we call **Abbeystowe**, which in Old English means 'meeting place' or 'meeting at the Abbey'.

A **free bus service** has been organised to transport patrons between Caboolture Station and Abbeystowe. The buses operate **every 30 minutes** between 7:45am - 5:45pm Saturday 8th & Sunday 9th July 2023.

The bus stop departure location for this free bus service will be confirmed closer to the festival weekend.

A map of the Caboolture Station can be found at the end of this guide.

Phone & Internet Service

Please be aware that there is **limited phone & internet service available at Abbeystowe**.

We recommend bringing cash with you to the Abbey Medieval Festival.

A small team of dedicated coordinators manage the Abbey Medieval Festival, most are volunteers. This year, we've worked together to create this *Accessibility Guide* to better support visitors in feeling safe and welcome during the Abbey Medieval Festival weekend.

We are conscious our site still has limitations with accessibility as an open field grassed area, and this accessibility plan is an evolutionary process where we will learn and improve each year through communication and planning.

For any questions about accessibility at the Abbey Medieval Festival, please contact:



www.abbeymedievalfestival.com.au



enquiries@abbeytornament.com



07 5495 1652

Getting to Caboolture Station

Can I get public transport to Caboolture Station?

Yes, please see Translink's website for up-to-date public transport information:

<https://jp.translink.com.au/plan-your-journey/journey-planner>

Is there accessible parking at Caboolture train station?

Yes, however parking is limited and not recommended for long-term use.

Is there a drop-off area at Caboolture Station?

Yes, there is a drop-off location to the left of Platform 1, that can be accessed by the Mathew Terrace entrance. A map of Caboolture Station can be found at the end of this guide.

Is there clear signage at Caboolture Station?

Yes, there is clear signage at Caboolture station. To better familiarise yourself with Caboolture Station, a map is provided at the end of this guide.

Are there accessible pathways and entrances at Caboolture Station?

Yes, Caboolture Station has flat, firm and level pathways and entrances.

Accessibility at Caboolture Station

Is there seating at Caboolture Station?

Yes, there is seating available at Caboolture Station.

Is there a Hearing Loop available at Caboolture Station?

Yes, a hearing loop is available.

Is there shade at Caboolture Station?

Yes, Caboolture Station includes undercover areas.

Is there an accessible toilet at Caboolture Station?

Yes, an accessible toilet is available at Caboolture Station

Is there a 'Changing Places' toilet at Caboolture Station?

No, there is not a 'Changing Places' toilet at this station. The nearest facilities are:

- South Pine Sports Centre
- Albany Creek Aquatic & Leisure Centre
- Graham Stewart Park

Is there food and drink available at Caboolture Station?

There is limited food & drink available at Caboolture Station.

Courtesy Bus to Abbeystowe

Where can I find the free bus that will take me to the Abbey Medieval Festival?

The free bus to Abbeystowe will depart from one of the bus stops at Caboolture Station - the exact bus stop will be confirmed closer to the festival weekend.

Will there be people at Caboolture Station to help those attending the Abbey Medieval Festival?

Yes! We have amazing volunteers from the Abbey Medieval Festival who will be at the Caboolture Station to support people who are using the free bus service to Abbeystowe.

Is the free bus to Abbeystowe accessible for wheelchairs?

We are still working with the bus company to confirm wheelchair access on this free bus service. Until we have confirmation from our transport provider, we recommend considering alternative transport options to Abbeystowe.

Is the free bus to Abbeystowe accessible for guide dogs and support animals?

Yes, the bus to Abbeystowe welcomes registered guide dogs and service animals.

Is the free bus to Abbeystowe accessible for prams and families?

Yes, the bus to Abbeystowe has luggage bays available which are also suitable for prams and walkers.

Additional Information

Do I need to be COVID vaccinated to attend the Festival?

Festival participation in, and attendance at the Festival will be in accordance with any Government health mandates at that time. Currently, the Queensland Government mandate says you are **NOT required to be vaccinated** to attend a festival. However, it will be whatever the regulations are come 8 & 9 July.

Does Abbeystowe have phone service?

Due to the high volume of people attending the Abbey Medieval Festival, phone service and internet connection at Abbeystowe can be limited.

Does Abbeystowe have Eftpos facilities?

Some of our stallholders and peddlers may not have EFTPOS facilities, and connectivity can be an issue, so we highly recommend bringing cash or using the ATM facilities which will be available at the Festival.

Where can I find more information about Caboolture Station?

For more information about Caboolture Station, please visit:

Translink:

<https://translink.com.au/travel-with-us/accessibility>

Queensland Rail:

<https://www.queenslandrail.com.au/forcustomers/stationsmaps/stationfinder#StationDetail>

The Queensland Rail website includes:

- A downloadable text description of the Caboolture Station map
- An Audio Described map of Caboolture Station

Caboolture Station Platform Access Map

CORE ZONE

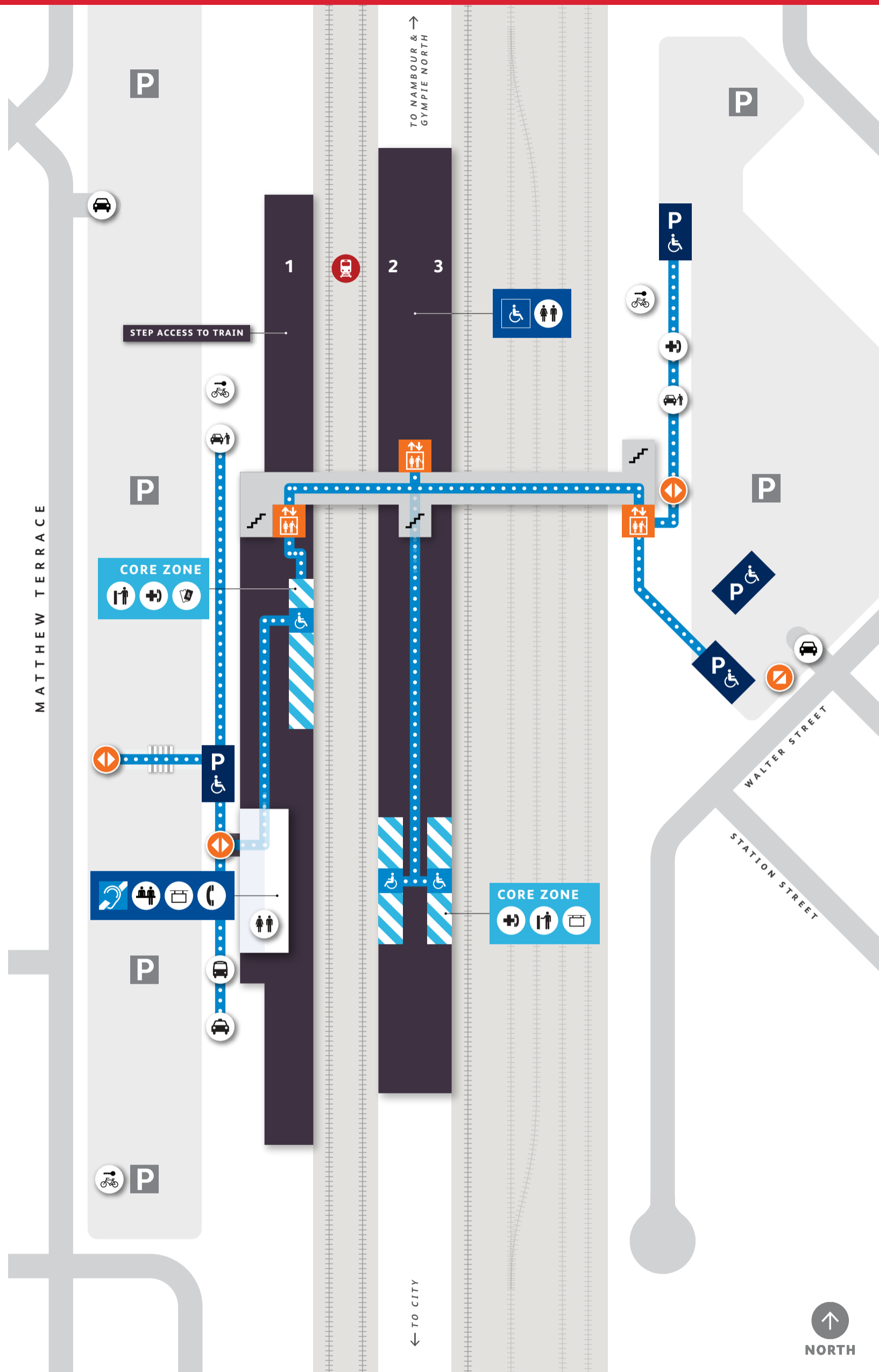
- Assisted Boarding Point
- Help Phone
- Next Train Information
- Tickets/ Fares
- Customer Information Screen

STATION FEATURES

- Hearing Loop
- Entry
- Accessible Parking
- Accessible Path of Travel
- Parking
- Steep Ramp
- Lift
- Stairs
- Tickets/ Fares
- Customer Service Window
- Accessible Toilets
- Toilets
- Bike Lockers
- Vehicular Entry
- Taxi
- Kiss'n'Ride
- Payphone
- Bus Stop

OTHER FEATURES

- Shelter
- Priority Seating
- Bike Rack
- Tactile Ground Indicators

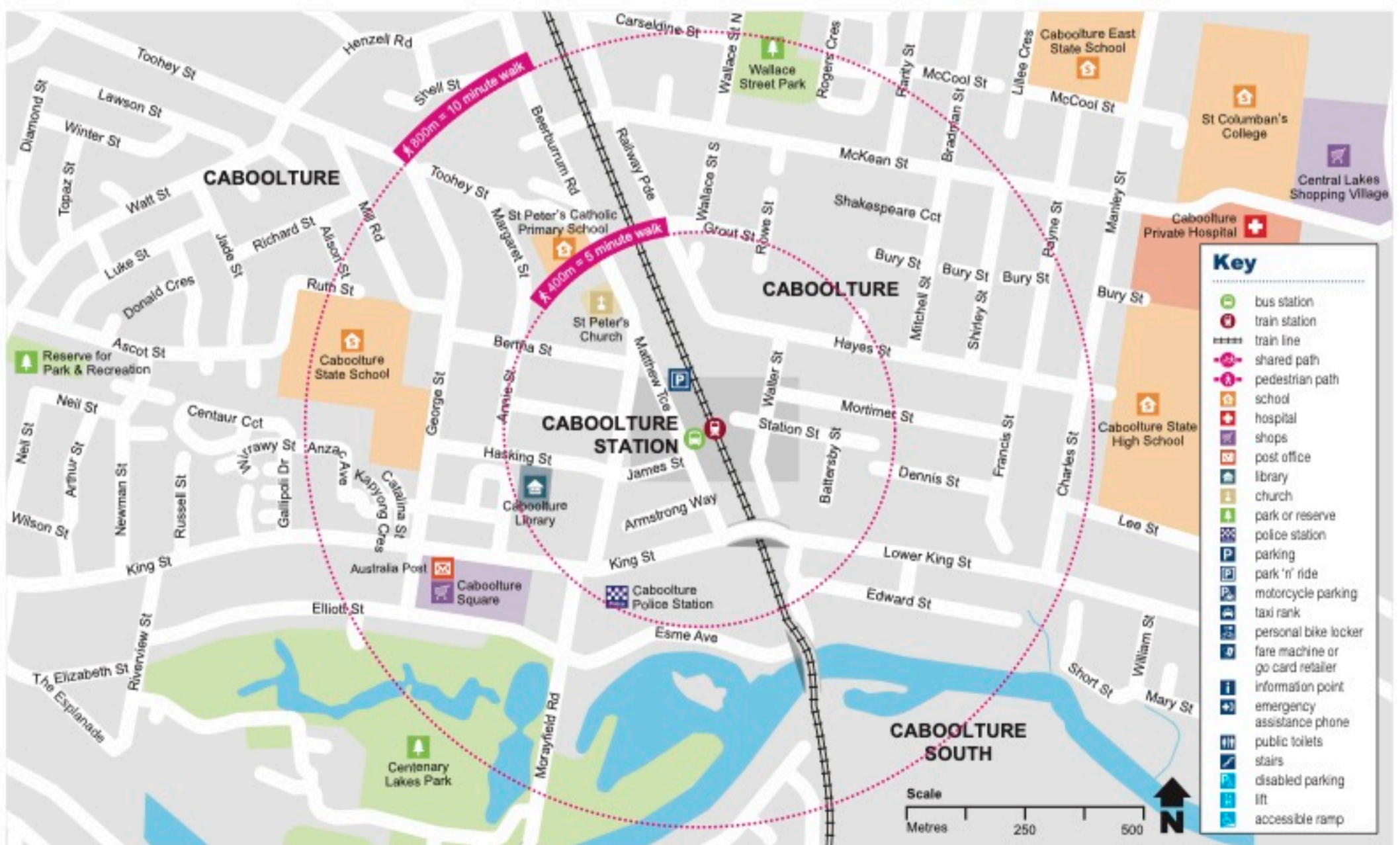
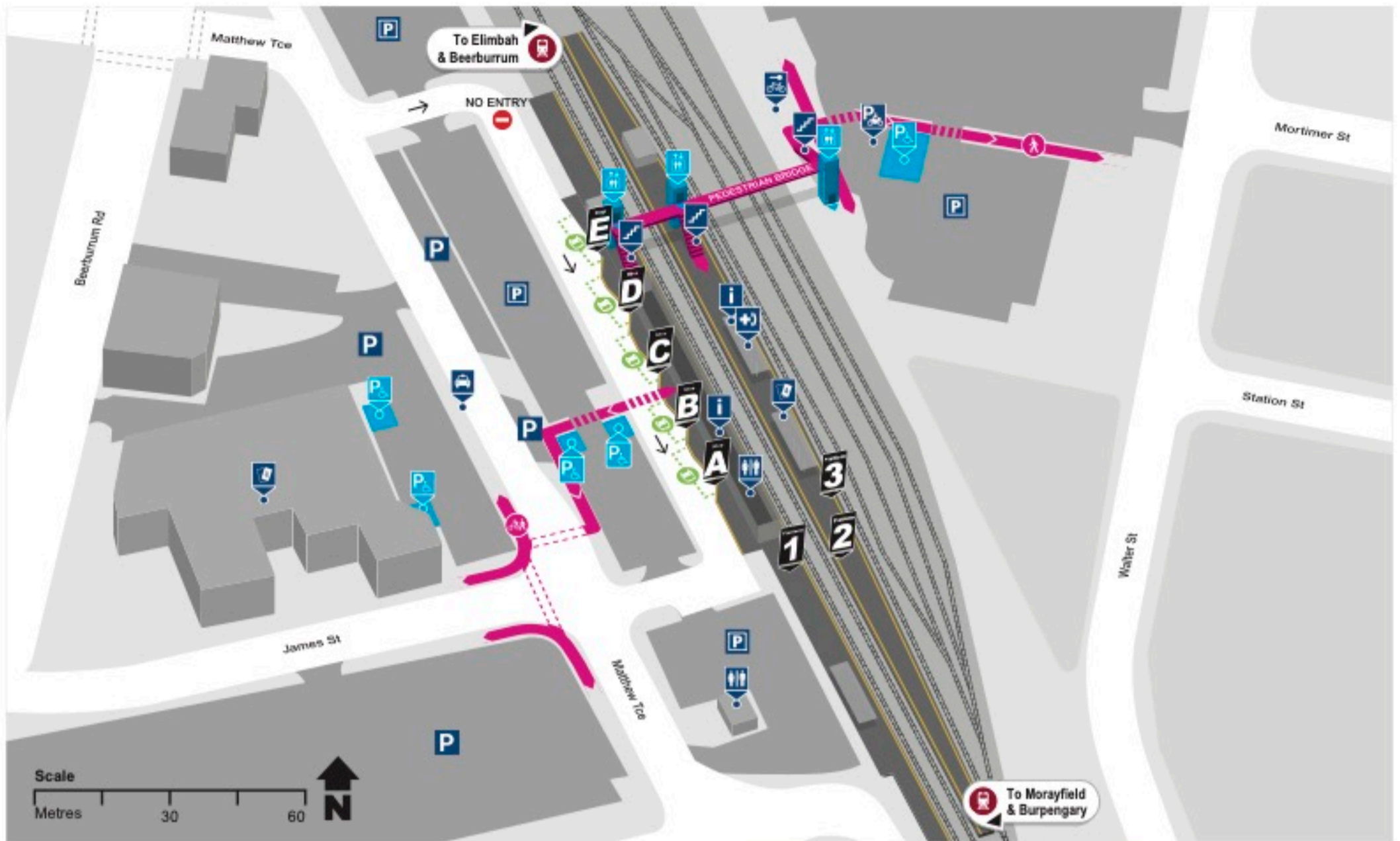


Design features of toilet and carparking facilities can vary between stations.



Caboolture station locality map

Effective March 2022



mytranslink app • translink.com.au • 13 12 30